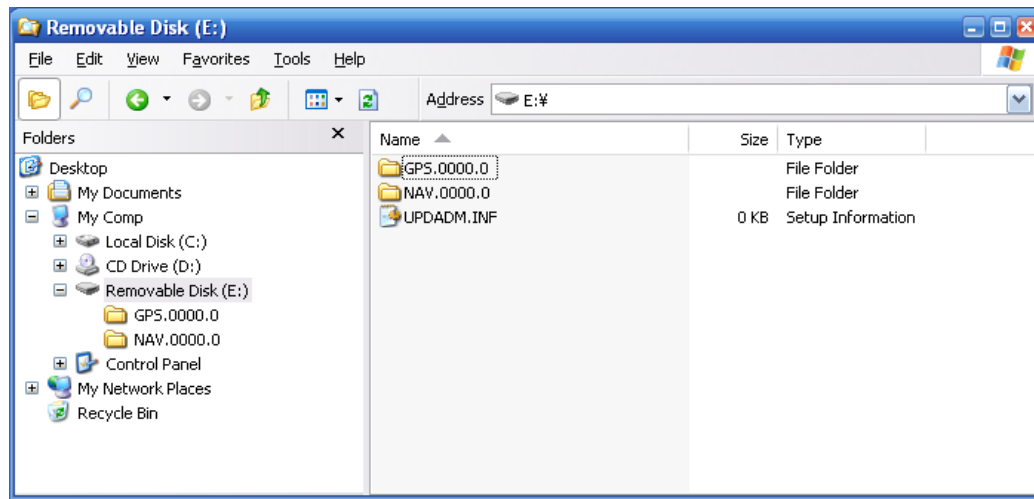


Navigation Unit Updates Procedure

1.Prepare data for update

- 1-1. Download the latest update file (.zip)
- 1-2. Extract the download zip file.
- 1-3. Using an SD card adapter reader/writer prepare a blank SD card.
(FAT16/FAT32 format, capacity of 256MB or more, 2GB or lower)
- 1-4. Copy all of the extracted data into the root directory of the SD card.

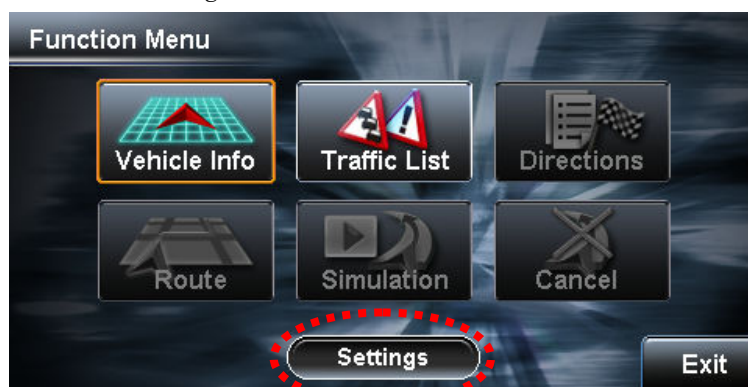


2. Updating the unit

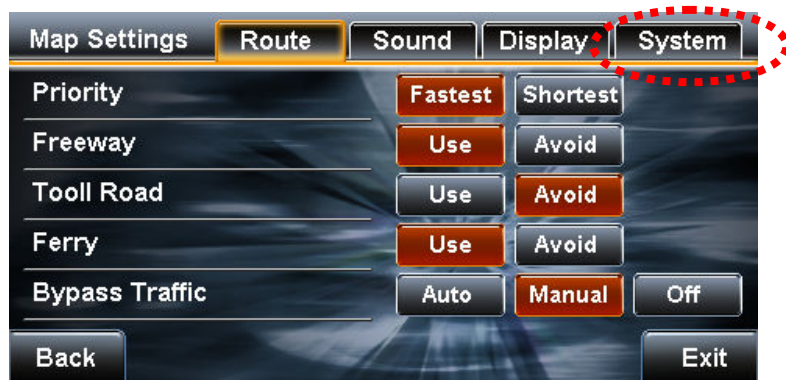
- 2-1. Start-up the KW-NX7000 and touch [FUNC] in Map screen as indicated below.



- 2-2. Touch [Settings] in Function Menu as indicated below.



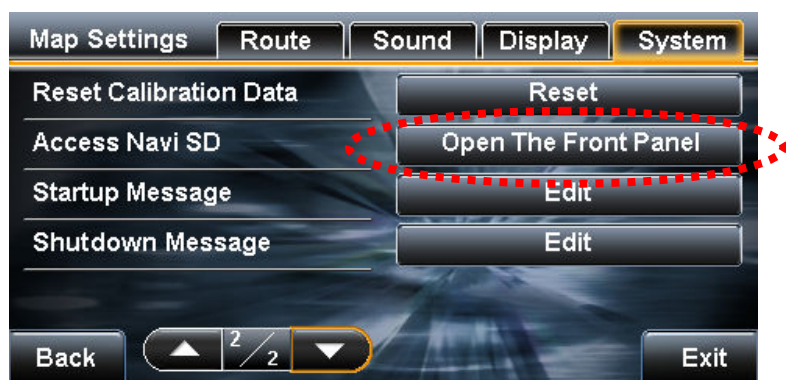
2-3. Touch [System] in Map Settings screen menu.



2-4. Touch [▼] to go to page 2.



2-5. Touch [Open The Front Panel].



2-6. The Display changes as shown below and the front panel opens automatically.



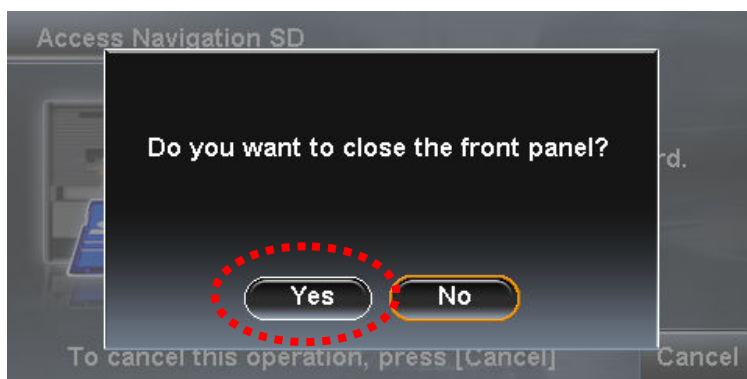
2-7. When the panel opens, there are two SD card slot. Remove the cover on the left side slot using a Phillips screwdriver.

2-8. Insert the SD card created in procedure 1 into the left slot. When the SD card is inserted, display change as indicated below.

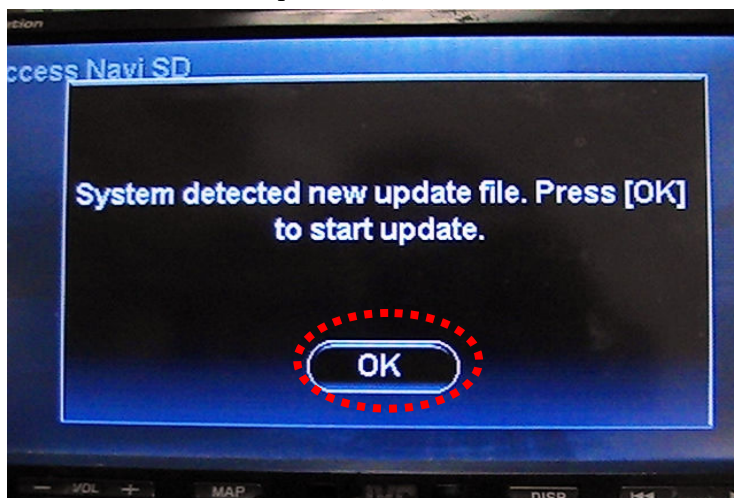
Touch [OK] as indicated below.



2-9. Touch [Yes] as indicated below and the front panel closes.

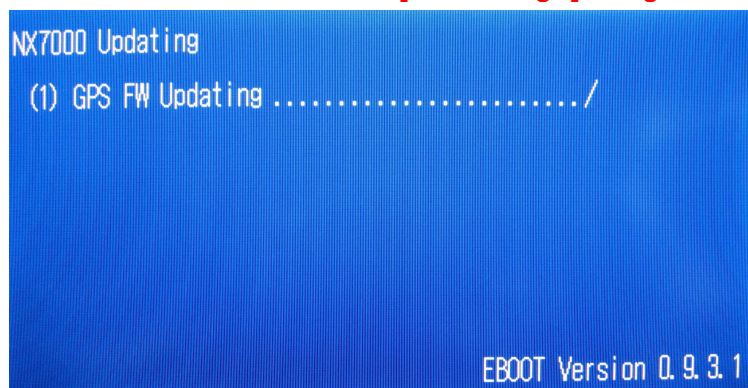


2-10. Unit detects new update file, Touch [OK] as indicated below.



2-11. Display changes as shown below during updating of GPS software. Update should take about 2 minutes.

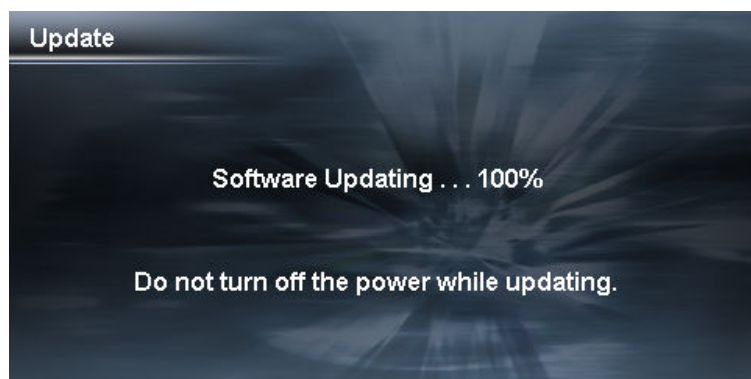
Attention: Do not turn off the power during updating.



If the screen shows “Retry” or “Fail”, press the reset button. After the unit restarts, ejects the SD card and try again. If you have any operational questions or issues after this update, please contact JVC Customer Care Center or JVC Service Center.

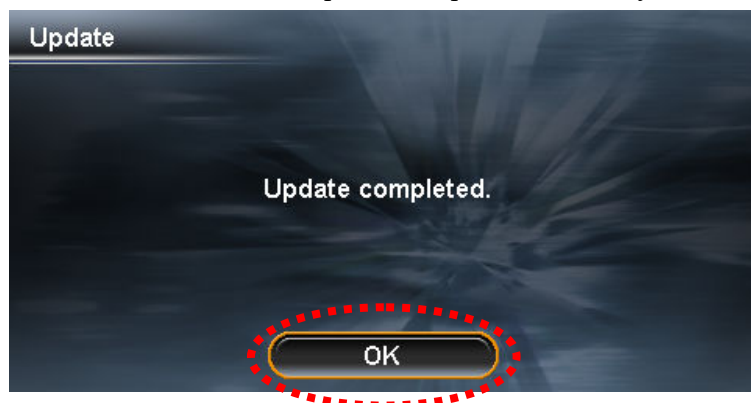
2-12. Display changes as shown below during the writing of software update..

Attention: Do not turn off the power during updating.



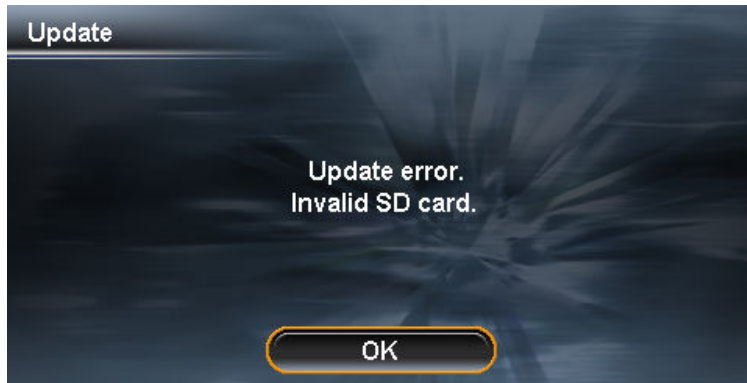
2-13. When update is completed, display changes as indicated below.

Touch [OK] the front panel will open automatically.



If the screen shows the message below, there may be an error on either the SD card or the card adapter reader/writer.

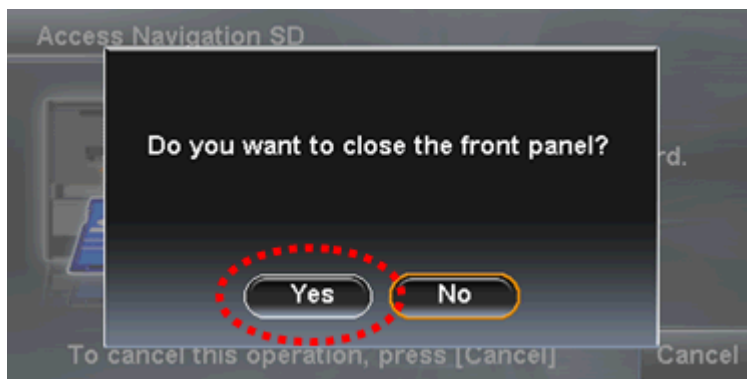
Try again after formatting the card or using another SD card adapter.



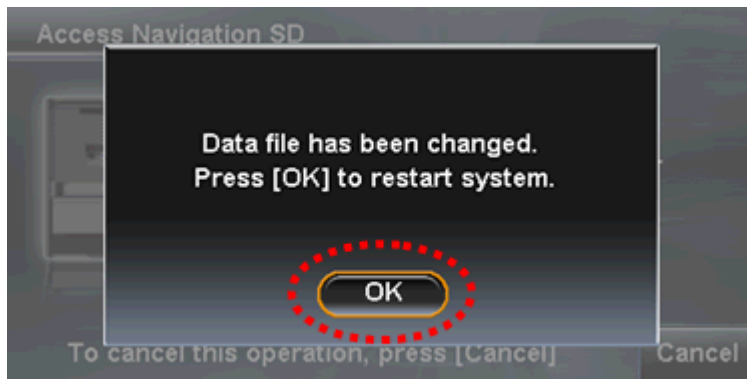
2-14. Eject the SD card and attach the slot cover removed in procedure 2-7 Touch [OK].



2-15. Touch [Yes] as indicated below and the front panel closes.



2-16. The front panel will close and the display will change as indicated below, Touch [OK]. The unit will automatically restart.



**Attention: After the unit start up automatically, must keep waiting one minute,.
Then, turn off the ignition and restart.**

3. How to confirm the version

3-1. Start-up the KW-NX7000 and touch [FUNC] in Map screen as indicated below.



3-2. Touch [Vehicle Info] in Function Menu screen as indicated below.



3-3. Touch [System] in Vehicle Information screen as indicated below.



3-4. Display changes as indicated below.

If the numbers in circled area below show "1.3.4.0", update has been done successfully.

