


Address	Jalan Surya Lestari Kav. 1-16B, Suryacipta industrial state, Karawang, 41361, Indonesia					
Establishment day	1997/11					
Major Products	Car audio set, Hifi stereo audio set, Drum assy					
ISO14001certification	1999/5		ISO14001renewed	2005/5		
Environmental Communication	information disclosure	1 items	visitors on factory tour	0 persons		
	collaboration with municipality			0 items		
Contact	Division	Internal audit			TEL	(0267) 440520 ext: 2300

### Site introduction

PT. JVC Electronics Indonesia (JEIN) occupied 100,000 m2 of land area divided into 30,485.4 m2 of main building, 3,348 m2 goods warehouse, and 2,592 m2 area of canteen, locker, and mosque. The production line configuration is made into 30 lines of Final assembly lines, 18 PCB assembly lines with automatic soldering machine (32 units), 22 lines of chip machine systems + 1 system for laboratory, and 3 deck drum lines, 3 DVC drum lines, 1 movie drum lines. We employed 3,900 persons at full production time, and some of them are facilitated with 4 buildings of dormitory with capacity 2000 persons.



Environmental compliance administrator : Agus Prasetyo

### FY2005 Environmental Activities

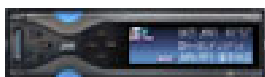
We are now get focus on how to deal with upgrade version of ISO 14001:2004. To train our environmental core team become our opening activity to prepare necessary items which might need to align our existing Environmental Management System with ISO 14001:2004. Energy saving, waste management, and environmental measurement is the ones that we bring to be improved as the main result of our production activities. We also support in RoHS management by giving inputs in order to gain accelerated achievement of elimination target.

### Products/Technology Information



#### KD-AV7000 (DVD/RCVR/7" Monitor)

235W Max Power-MOSFET Power Amp-Detachable Fully Motorize 7" InDash WideScreen Monitor-  
Touch Panel Operation with GUI-5.1ch Dolby Digital/DTS Decoder Built In-Dolby Pro Logic II-SIRIUS  
Compatible-DVD R/DVD RW Compatible-MP3 Compatible-CD/CD R/CD RW Compatible-DSP with 5 Ambience Modes-5 Band EQ-HS Illi Tuner-Station Name Registration-Multi Function Wireless Remote Control-Hideaway Unit-DUAL ZONE Function-VCD Playback Control-TFT Active Matrix LCD with Wide Viewing Angle-336,960 Pixel Resolution-Monitor Tilt Adjustment-CD Text-Direct Access Track-MP3 CD Changer control-Blue Color Display with



#### KD-SHX900 (CD/MP3/WMA Receiver with Built-In HD Radio)

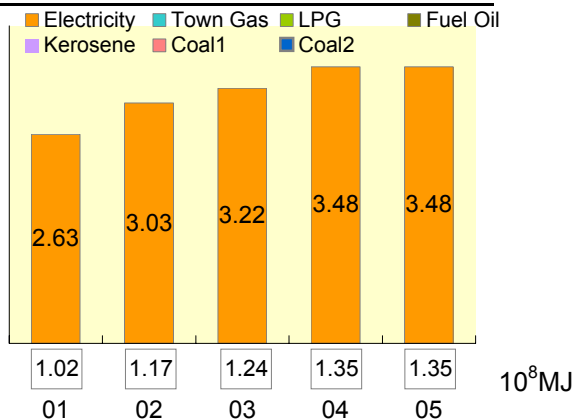
200W Max Power-MOSFET Power Amp-PICT (Personalize Image Capture Technology)-Application  
Disc (Image Converter Color)-256 Color OEL Display-SIRIUS Compatible-HD Radio Tuner Built In-DiAS Digital Tuner-Advanced Multi Bit DAC-MP3/WMA Compatible-CD/CD R/CD RW Compatible-DSP With 7 Ambience Modes-Digital 7 Band iEQ-BBE Digital High Definition Sound-5V Line Output Level-Gold plated Line Output Terminals (x2 Pairs)-Gold plated Subwoofer Output Trminals with level/Frequency control-Gold plated Adjustable Line Input-Motorized Slide-out Face

## Major Performance

\* 05,2005: April 1,2004 - March 31,2005

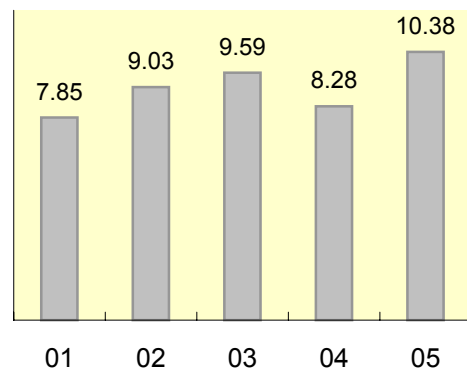
## Energy

Unit:1000kl



## CO2 Emmisions

Unit:1000t-CO2



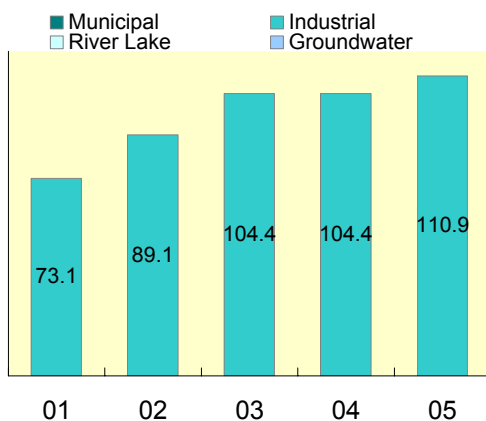
## Natural Energy (FY2005)

0.00 (1000kW/h)

[Calculation satandards]

CO2 emission coefficients and units : Electric power = 0.79 kg-CO2/kWh

## Water

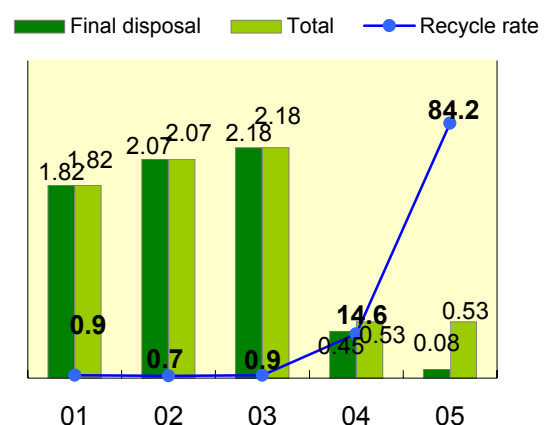
Unit:1000m<sup>3</sup>

## Circulated water

FY2005 0.00 m<sup>3</sup>

## Waste

Unit:1000t,%

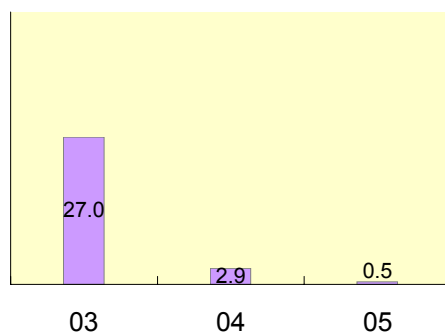


## Chemical substances

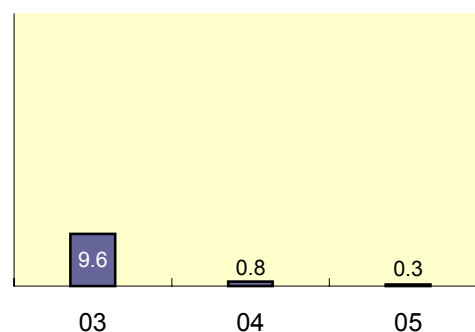
This data has been disclosed data that globally execute 33/50 reduction pl;

Unit:t

## Handle



## Released and Transferred



## Compliance

	Number of vioration	Situation and countermeasure
Air	0	
Water	1	NH3 level is high, mitigate by giving enough air sirculation in waste water ways
Odor	0	
Noise/Vibration	0	
Others	0	

## Policy

PT. JVC Electronics Indonesia has commitment to preserve convinience environment while operating industry activity beginning from planning, production and marketing, and concerned to the environmental reservation as well, as mentioned in the company's policy as follow:

- 1) Company prevents the negative environmental impact of using hazardous materual and also avoid employees from exposure of hazardous or dangerous radiation from electrical equipment.
- 2) We prevent the environmental from air pollution because of emission and hazardous waste disposal from industry activity.
- 3) We will always effort to improve company's performance in non hazardous waste management.
- 4) We will always obey and fulfill any legislation related, regulation related, and other requirement related to the environmental that is relevant to our activity.
- 5) We will save and use of natural resources wisely.
- 6) We will always effort to improve company's performance in the environmental sustainability.
- 7) We will serve and improve our knowledge and awareness of all human resources about environmental management in our company.
- 8) We will carry out the above policy consistently and necessary to be informed to other concern parties