


JVC Disc America Co.

Matsushita Group Site report 2005
FY2005 :April 1, 2004 - March 31, 2005

Address	#2 JVC ROAD, TUSCALOOSA, ALABAMA 35405					
Establishment day	1987/4					
Major Products	CD, DVD					
ISO14001certification	2000/08		ISO14001renewed	2005/03		
Environmental Communication	information disclosure	1000 items	visitors on factory tour	10 persons		
	collaboration with municipality			1 items		
Contact	Division	FELICIA GROSS			TEL	205-556-7111

Site introduction

JDC maintained its environmental management system and ISO 14001 registration by effectively implementing the Environmental Policy. The policy promotes compliance with regulations, pollution prevention and continual improvement. JDC has continued to incorporate energy efficient equipment into its processes, implement new waste minimization projects and has consistently remained within regulatory permit parameters with no violations.



Environmental compliance administrator **FELICIA GROSS**

FY2005 Environmental Activities

JDC Environmental Management System (EMS) has been successful in controlling the environmental aspects of the organization. For 2004, JDC maintained its regulatory permits with no violations. The EMS has become a significant part of customer requirements and allows JDC to maintain existing customers and attract new customers. JDC installed energy efficient equipment in an effort to reduce energy consumption per piece. Recycling of packaging materials and plastics was increased in order to prevent pollution. The evaluation of new technology and waste minimization projects were initiated in support of JDC's commitment to continual improvement.

Products/Technology Information



Cooling Tower Piping

JVC increased chiller efficiency by replacing the existing 12" cooling tower piping with 20" piping. The new piping allows the chillers to operate at full capacity.



Product name

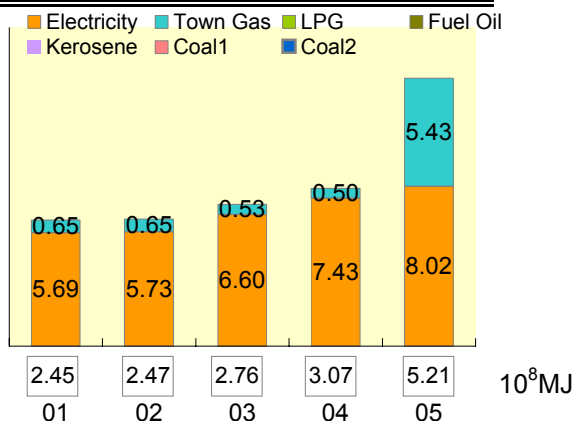
In order to meet customer requirements, JVC installed a new grinder for waste plastic. The recycling efficiency of plastic has increased with the installation of the grinder.

Major Performance

* 05,2005: April 1,2004 - March 31,2005

Energy

Unit:1000kl



Natural Energy (FY2005)

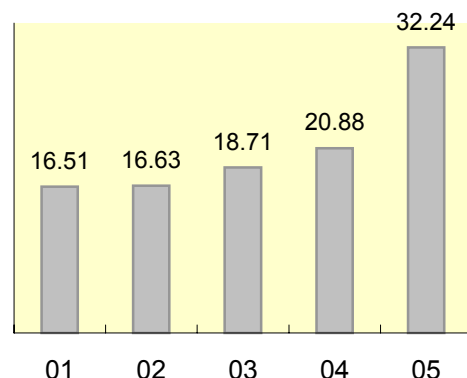
0.00 (1000kW/h)

[Calculation standards]

The CO2 emission factor of electricity is 0.357kg-CO2/kWh. Town gas is 2.359kg-CO2/m3.

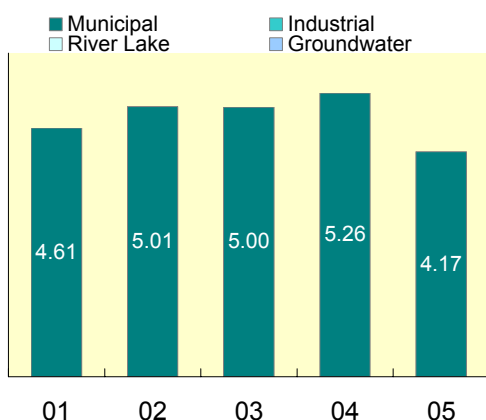
CO2 Emmissions

Unit:1000t-CO2



Overall CO2 emissions increases; however, CO2 emissions per piece decreases.

Water

Unit:1000m³

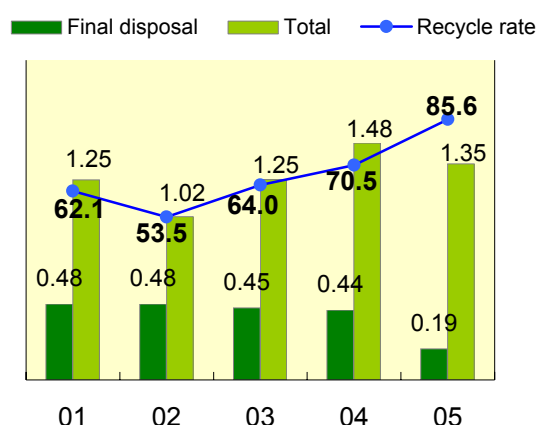
Circulated water

FY2005 0.00 m³

Water usage typically increases with increased production.

Waste

Unit:1000t,%



Incorporation of environmentally conscious equipment, processes and activities allows the amount of waste to remain fairly constant as production increases. The continued recycling efficiency of packaging and plastic materials increases the recycling rate.

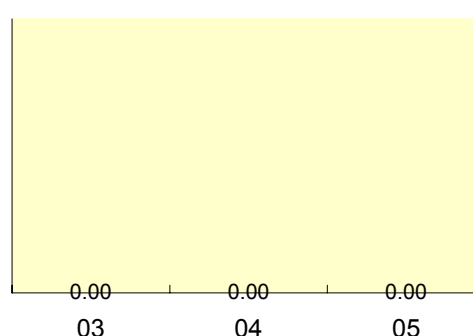
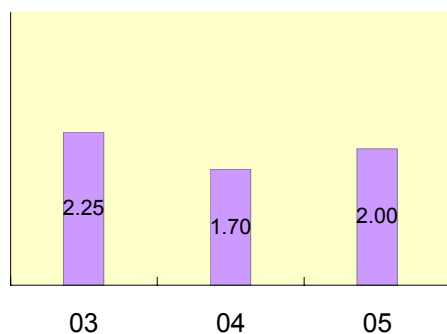
Chemical substances

This data has been disclosed data that globally execute 33/50 reduction pl;

Unit:t

Handle

Released and Transferred



Based on chemicals from Matsushita Chemical List with usage over 0.5 tons.

Compliance

	Number of violation	Situation and countermeasure
Air	N/A	NOT SUBJECT TO AIR PERMIT DUE TO SIZE OF OPERATION
Water	0	SID, NPDES PERMITS
Odor	N/A	NOT APPLICABLE
Noise/Vibration	N/A	NOT APPLICABLE
Others	NOT APPLICABLE	

Policy

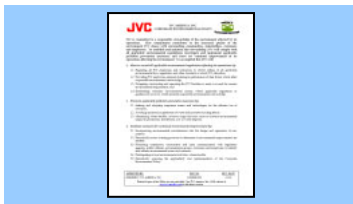
JVC is committed to a responsible stewardship of the environment affected by its operations. This commitment contributes to the increased quality of the environment JVC shares with surrounding communities, stakeholders, customers and employees. To establish and maintain this stewardship, JVC will comply with all applicable environmental regulations; investigate and implement applicable pollution prevention measures; and strive for continual improvement of its operations affecting the environment. To accomplish this JVC will:

1. *Meet or exceed all applicable environmental regulations affecting its operations by:*
 - 1.1. Requiring all JVC employees and contractors to strictly adhere to all applicable environmental laws, regulations and other standards to which JVC subscribes;
 - 1.2. Providing JVC employees adequate training in performance of their duties which affect responsible environmental stewardship;
 - 1.3. Designing, constructing and operating the JVC Facilities to meet or exceed the current environmental requirements; and
 - 1.4. Establishing voluntary environmental actions, where applicable regulations or guidance do not exist, which promote responsible environmental stewardship.
2. *Promote applicable pollution prevention measures by:*
 - 2.1. Seeking and adopting competent means and technologies for the efficient use of resources;
 - 2.2. Avoiding unnecessary generation of waste and promote recycling efforts;
 - 2.3. Minimizing, when feasible, resource usage that may cause an adverse environmental impact in production, distribution, use, or waste disposal.
3. *Institute measures for continual environmental improvement by:*
 - 3.1. Incorporating environmental considerations into the design and operations of new projects;
 - 3.2. Periodically review existing processes to determine if environmental improvements are feasible;
 - 3.3. Promoting cooperative, constructive and open communication with regulatory agencies, public officials, environmental groups, customers and employees to identify and address environmental issues and concerns;
 - 3.4. Participating in local environmental activities, where feasible.
 - 3.5. Periodically assessing the applicability and implementation of the Corporate Environmental Policy.

Environmental Communication



JDC and Arcadia, adopt-a-school partners, communicate pollution prevention to its employees and students by collection used printer cartridges and cell phones for recycling. Recycling proceeds go to Arcadia Elementary School.



The JVC Environmental Policy is available to the public at www.jvcmedia.com.